

ALU STANDARDFARBEN



- RAL Farbtönen sind vereinigt für Beschichtung Holz/Alu und Kst/Alu
(Hersteller ist identisch)

GLATT



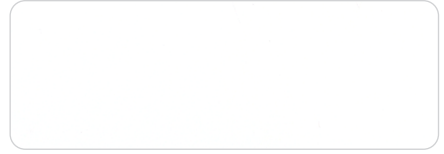
RAL 7004
Signalgrau

HolzAlu, KstAlu 68/70183



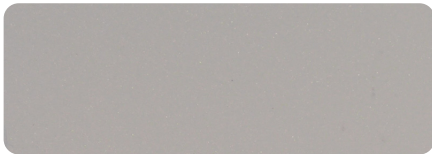
RAL 7016
Anthrazitgrau

HolzAlu, KstAlu 68/70153



RAL 9016
Verkehrsweiss

HolzAlu, KstAlu 68/10078



RAL 9006 Metallic Glatt
Weissaluminium

HolzAlu, KstAlu 68/90006



RAL 9007 Metallic Glatt
Graualuminium

HolzAlu, KstAlu 68/90007



RAL 8001
Ockerbraun

HolzAlu, KstAlu 68/60139



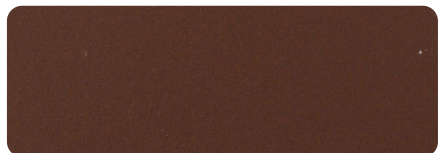
RAL 8003
Lehmbraun

HolzAlu, KstAlu 68/60110



RAL 8007
Rehbraun

HolzAlu, KstAlu 68/60297



RAL 8017
Schokobraun

HolzAlu, KstAlu 68/60088

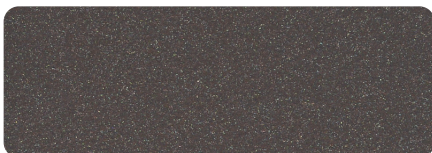


RAL 6005
Moosgrün

HolzAlu, KstAlu 68/50006

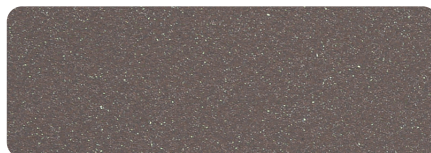


FEINSTRUKTUR



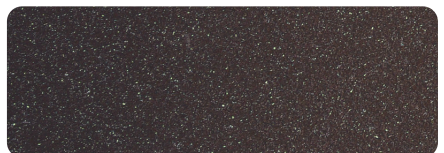
DB703

HolzAlu, KstAlu 68/80045



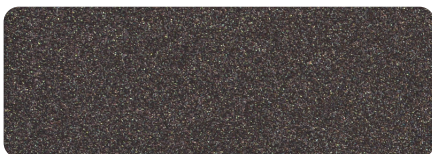
DM 02
Grau Marmor

HolzAlu, KstAlu P3-068-S750-002



DM 03
Braun Marmor

HolzAlu, KstAlu P3-068-S850-001



Cast Iron

HolzAlu, KstAlu SD031C4900520



Precious Sand

HolzAlu, KstAlu SD031C8006020



Rostiges Eisen

HolzAlu, KstAlu 591TE83962R30

